

WELCOME HOME CLASS 19

We, your friendly Learning Community Coordinators (LCCs), absolutely cannot wait to have you here on campus in only a few short months!!

Living on a campus is a wonderful and memorable thing! While you call Impact 360 home, Heritage and Legacy are the two residential buildings where you will get to experience community life in transformative and beautiful ways during your 9 months as a Fellow. You may already be wondering about room layout, closet dimensions, if you need to purchase twin sheet or XL twin sheets, will you have access to a stove or microwave, and a whole other host of things - do plates come in the Commons Kitchen (they do!). Can I decorate my room? You can but there are some guidelines and this doc is where you can find all of that information and more!

Additionally, once you're all settled in to campus you may be curious about what your first few weeks on campus will look like, including Labor Day - the first holiday (aka no class) you'll experience as a Fellow. Well, there is information about that here as well!

Please **carefully** read through this information and remember that more details about what it looks like to live on campus can be found in the [**2024-2025 Student Handbook**](#).

LABOR DAY 2024

+ THE FIRST 3 WEEKS OF CAMPUS LIVING

Labor Day 2024 will happen on the second Monday you're at Impact! To get ahead of this + give you a chance to make plans, we wanted to make sure you knew what the expectations were.

On Monday, September 2, there will be NO CLASS but from 10a-12p, there will be a STUDENT-LED event happening. After 12p, you are free to leave campus, but will need to be back by curfew that night (11p, weekday curfew). You'll get more details about this once you're on campus.

The first 3 weeks Fellows are on campus are "orientation mode." This time is designed to help each class adjust and transition to their new community and a number of things happen during this time period, including participation in a "closed campus." This means that from **08/23/2024-09/13/2024**, we ask 2 things -

- That you sleep on campus every night. This means that from **August 23-September 13**, unless class/programming is happening, you're free to leave campus during the day and on the weekends but will need to plan to be back by curfew to sleep on campus each night. Only overnight requests for **after September 13** will be approved (unless special circumstances arise; in that case talk to your Learning Community Coordinator [LCC]).
- That you wait to have on-campus guests until after these 3 weeks are over. We love it when you have your family + friends on campus and enjoy getting know them! But to help you bond with your new community, we ask that all on-campus guest registrations be **delayed until 09-13-2024**.

Legacy and Heritage, Impact 360's residential buildings, are each divided into 2 houses separated with a common space in the middle of the building. Each house has two residential floors, separated by key-card access points, with suites – one for men, one for women – comprised of three Fellows rooms and a Resident apartment on each floor. Fellows will be housed in either Frontier House or Timberline House in Heritage or in either Matterhorn House or Breakwater House in Legacy.

One suite consists of three rooms, a common space, and an apartment where a Resident will live (see Residential interior image)

- Each suite's common space has two small kitchenettes with a refrigerator, microwave, and sink.
- Every suite has a broom, dust pan, mop, bucket, and 13 gallon trash bin
- Students need to provide their own cleaning supplies (i.e. all purpose cleaner, disinfectant spray, window cleaner, 13 gallon trash bags). Previous classes have split the costs of these items.
- Personal food may be stored in the suite fridge and cabinets! *bring baggie clips for food storage

Each room has furniture sets for 4-6 people.

- All bed frames are able to be bunked or lofted anywhere between 11" and 70"
 - Bed risers are not necessary
- Each room shares a bathroom with two showers (shower curtains included), toilets (1 in Legacy, 2 in Heritage), two sinks, two mirrors, and shelving space for toiletries
 - Students will need to supply their own toilet paper and general cleaning supplies throughout the year for their restroom.
- Trashcans are provided in each room and restroom.

Each room will have the following furniture:

- 1 bed (Twin XL) [Legacy & Heritage]
- 1 dresser (3' x 2' x 2'6") [Legacy & Heritage]
- 1 desk (3'6" x 2' x 3') w/ a bookshelf (3'4"x 1' x 2'4") [Legacy & Heritage]
- 1 closet (9' x 3'2" x 3'6" with a storage space + clothes rod 6'8" off the ground, and a curtain rod 7'5" from ground) [Legacy & Heritage]

Starting on the next page, you will find 3 images

1. Legacy Exterior (with Breakwater house + Matterhorn house labeled)
2. Heritage Exterior (with Frontier house + Timberline house labeled)
3. Residential Interior - a basic understanding of the interior of both residential buildings

Check out these pictures to get an idea of the space you'll be living in. For more information about the things labeled on the Residential Interior image, read on!

Commons Kitchen: located within the center common space of each building is a full-size kitchen that is stocked with all the kitchen/cooking supplies and dinnerware (plates, cups, eating utensils) students will need.

- The commons fridge will be available for those who are cooking in the common space, but not for storing personal food. Suite fridges will be available for that.

Resident Apartment: located within the suite of each house is where a part-time Resident lives, one per floor

Laundry Room: located within the center commons space of each building are two laundry rooms, one per floor, separated by gender.

- Students will need to provide their own laundry pods throughout the year

Learning Community Coordinator apartment: located within the center common space of each building is where full-time staff live, one per floor

Please Note: On Move-In Day (8/23/2024), all room furniture will be arranged in a way that maximizes space so everyone can efficiently move in and around. All furniture is required to remain where it is. The Operations staff will be available to help students with rearranging in the weeks following Move-In Day but not the day of.

LEGACY

COMMONS

**BREAKWATER
HOUSE**

**MATTERHORN
HOUSE**



HERITAGE

**FRONTIER
HOUSE**

COMMONS

**TIMBERLINE
HOUSE**



Residential Interior

HOUSE A

HOUSE B

Room

Suite

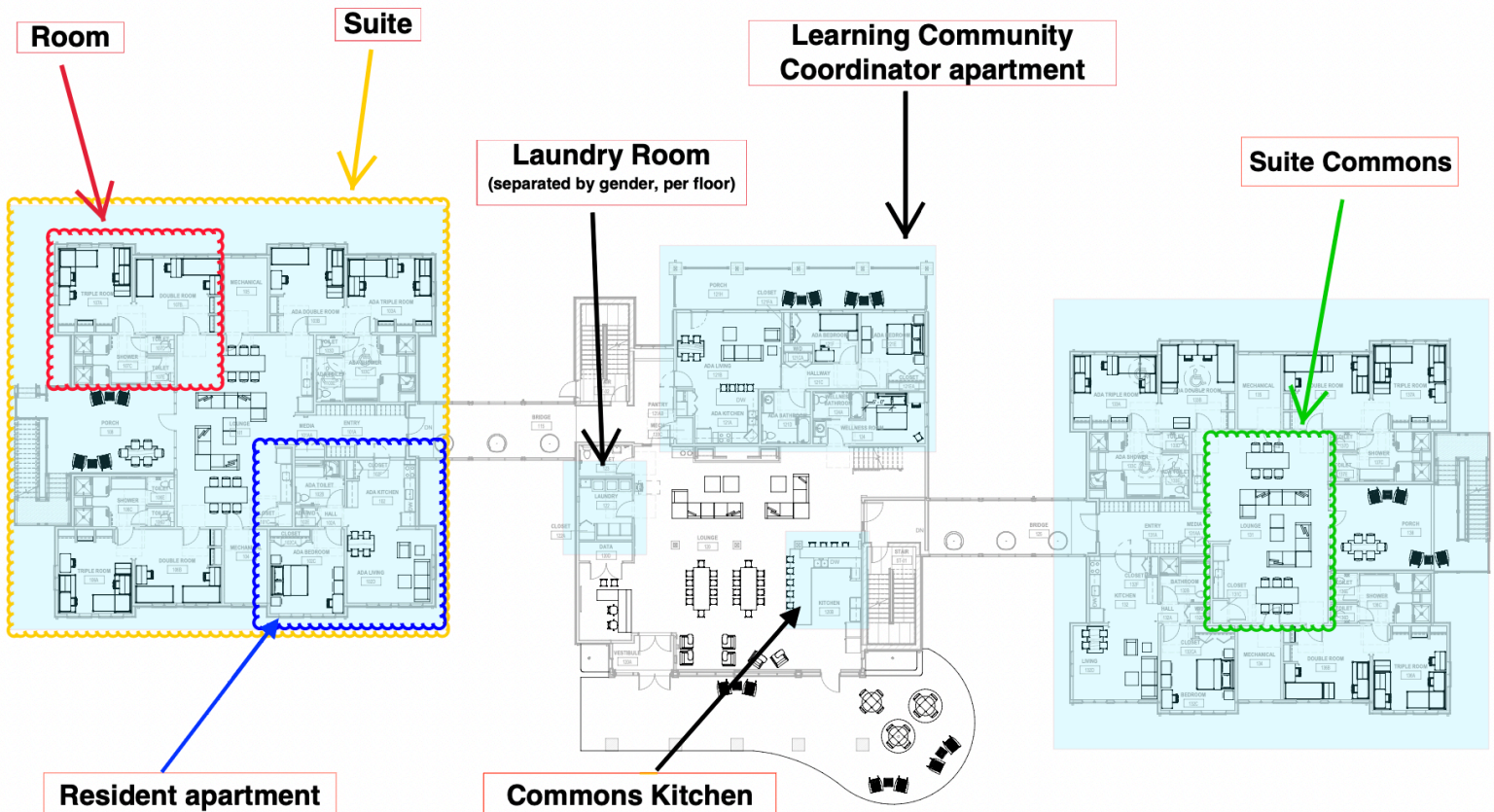
**Learning Community
Coordinator apartment**

Laundry Room
(separated by gender, per floor)

Suite Commons

Resident apartment

Commons Kitchen



SUGGESTED PACKING LIST

There are many things that are going to be personal preferences when packing for your year in fellows. Here is a (non-exhaustive) list that past alumni have crafted to help you figure out what is necessary to pack.



ESSENTIAL

Twin XL Sheets	Food/snacks for weekends
Toiletries	Trash Bags
Business Casual Clothes (See dress code)	Pens/Pencils
Laundry Detergent (preferably pods)	Laptop
Suitcase for travel	Toilet Paper
Vitamins	Clothes hangers
Medicine	Backpack
Towels	Plunger
At least 1 Business Professional outfit	Cleaning products
TSA carry-on bag	



COMFORT ITEMS (OPTIONAL/PERSONAL PREFERENCE)

Lamps	Mattress topper
Posters	Power strips
Journal	Shower Caddy
Bluetooth speaker	Flashlight
Hammock	Notebooks



SUGGESTED PACKING LIST

There are many things that are going to be personal preferences when packing for your year in fellows. Here is a (non-exhaustive) list that past alumni have crafted to help you figure out what is necessary to pack.



DO NOT BRING

Additional furniture

Candles, incense, fireworks, or any other incendiary device

Cigarettes, E-Cigarettes, Hookah, Snuff

Drones

Exercise equipment (provided)

Halogen lamps

Knives with a blade bigger than 4 inches

Microwaves (provided)

Refrigerators (provided)

Printers (provided)

Televisions or additional monitors

Weapons of any kind

Any item with an exposed hotplate or heating element including

coffeepots and toaster ovens.



 **DO USE**

Nails/hooks smaller than the eraser head on a pencil



DO NOT USE

Tape



ADVICE FROM FORMER FELLOWS

"Create clear boundaries of space and make room for everyone to create their own space. Show patience for those that are indecisive."



THANKS CLASS 19

for reading through all of this! We hope this helps you better understand the layout of your residential home for your time with us at Impact. Again, be sure to supplement this information with what can be found in the Student Handbook concerning campus life and living. More information, including rooming assignments (yay!) and details about Move In Day (8/23/2024), will be shared later in the summer.

We're counting down the days until you're here!

Best,

Adam Story [Frontier LCC]

Aly Nicholas [Breakwater LCC]

Charmaine Porter [Timberline LCC]

Rafael Torres [Matterhorn LCC]